

ETRUSCUS RESOURCES

CORPORATE FACTSHEET APRIL, 2023

CSE: ETR | OTC: ETRUF | FSE: ERR

ABOUT US

Etruscus Resources Corp. is a Vancouver based junior exploration company with a focus of developing its 100% owned Rock & Roll and Sugar projects in BC and the optioned Lewis Property in Newfoundland.

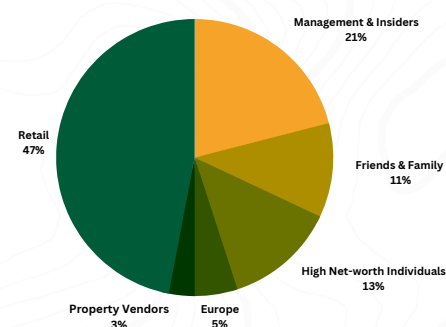
CAPITAL STRUCTURE

As of April 24, 2023

Issued & Outstanding	40,663,422
Options	3,650,000
Warrants	10,169,946
Fully Diluted	54,483,368

Market Cap: ~\$6 MILLION

SHARE DISTRIBUTION



CONTACT US

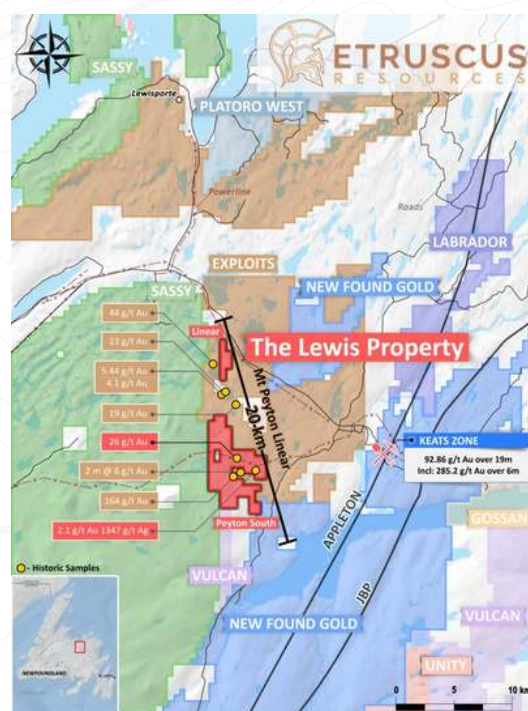
- +1 604 336 9088
- info@etruscusresources.com
- Suite 604 - 850 West Hastings St. Vancouver, BC, Canada, V6C 1E1
- www.etruscusresources.com

NEWFOUNDLAND LEWIS PROPERTY

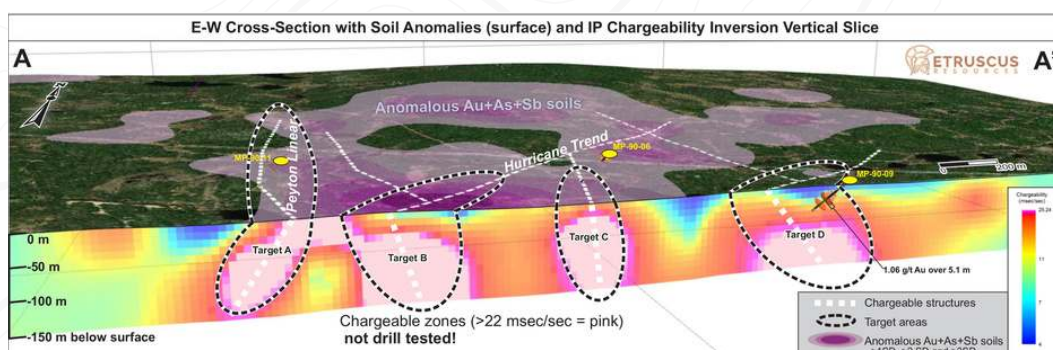
Etruscus has delineated a number of drill targets in the very active central Newfoundland mining camp only 10 km West of the Keats Zone discovery operated by New Found Gold. Over the last year and a half, ~2000 soil samples and 30 line km of IP have been completed along with digitization of historic work completed by Noranda in 1990. What has emerged is a number of highly prospective, undrilled chargeability anomalies sitting directly below very strong geochemistry in an area that has already proven to host gold in previous drill holes. So far, historic drilling has not yet returned the >20 g/t Au assays that have been identified in surface rock sampling, and the team is confident they have the best chance possible to make the next discovery in what is dubbed the Newfoundland gold rush.

LEWIS PROPERTY HIGHLIGHTS

- 2,567 Hectares located 10 km west of the Keats Zone Discovery
- Historic drilling by Noranda indicated property wide mineralization
- Located 4 km from TransCanada highway with easy access to property
- 4.6km of untested gold mineralized structures identified in recent IP survey
- >4 high priority drill targets with strong indicators of gold mineralizing systems (overlapping high chargeability, high grade rocks, and large soil anomalies)
- Significant upside as historic drilling never encountered grades in line with surface rock sampling (>20 g/t Au) and missed the newly modeled high chargeability.
- On property to drill test in spring 2023



CROSS SECTION LEWIS PROPERTY



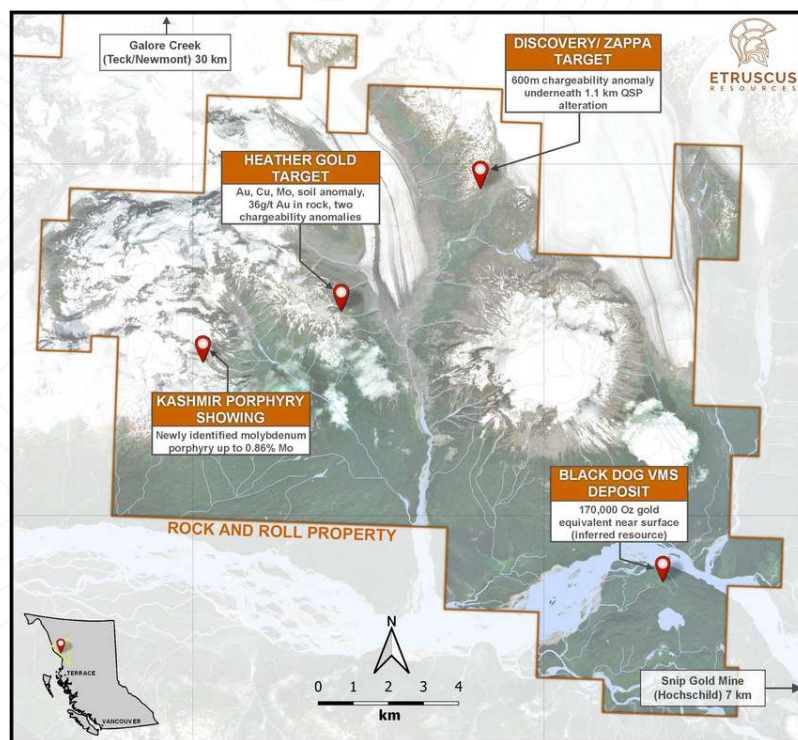
THE GOLDEN TRIANGLE ROCK & ROLL PROPERTY

A large land package in the Golden Triangle only 7 km from past producing Snip Mine and 30 km south of the major Galore Creek deposit owned by Teck/Newmont. Etruscus has been working these claims for four years and has delineated two very promising targets through surface sampling and more recently IP surveys. These targets represent significant potential for very large hydrothermal (porphyry or epithermal) systems in an area where major discoveries are consistently being made.

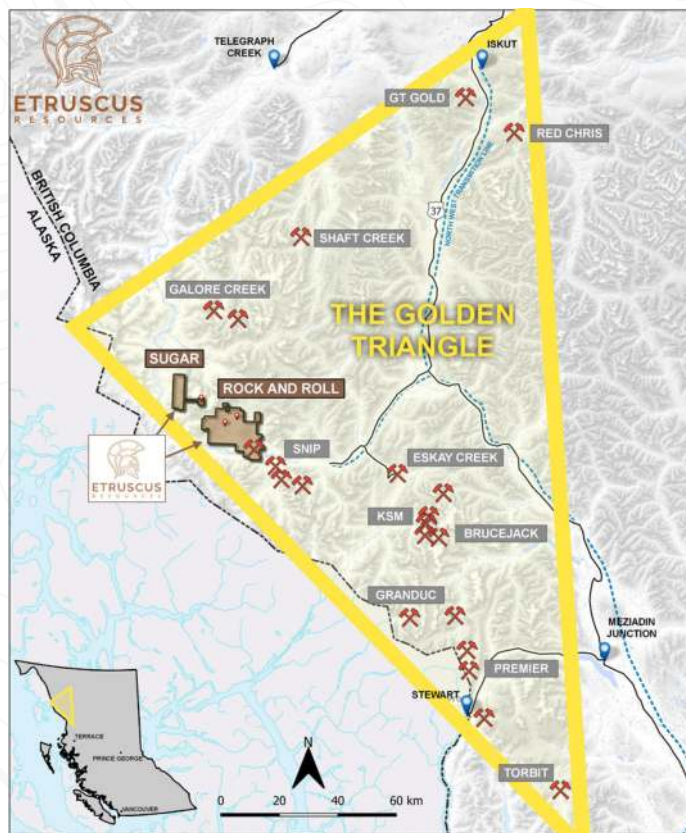
ROCK & ROLL HIGHLIGHTS

- Etruscus holds a significant and highly prospective 27,880-hectare land package within The Golden Triangle, British Columbia
- The Discovery Target demonstrates a 600 m wide chargeability anomaly coming to surface underneath a 1.1 km alteration footprint. This target has never been drilled before, provides indicators of large-scale porphyry mineralization and is a number one priority for drill testing in 2023
- Heather target represents a high-level, high-grade deposit model with a 300+ meter soil anomaly and rock samples up to 36.6 g/t Au. Strong chargeability anomalies identified underneath the anomalous geochemistry gives room for expansion and drill targeting in 2023.
- Newly discovered in 2022, the Kashmir Porphyry target provides molybdenum grades up to 0.86% and 18 rock samples averaging 0.18% Mo. Recent molybdenum price jump provides added interest in this new target.

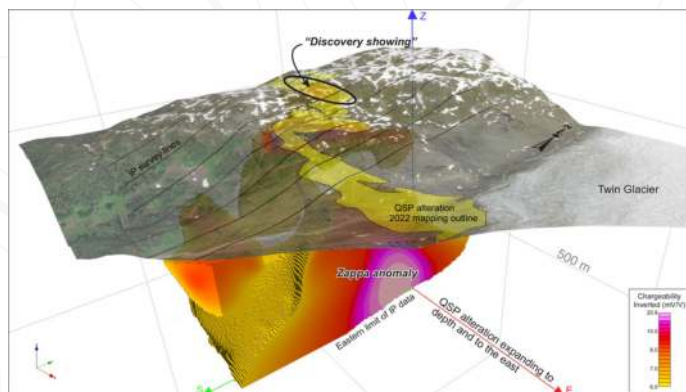
AREA MAP ROCK & ROLL PROPERTY



AREA MAP THE GOLDEN TRIANGLE



3D MODEL DISCOVERY ZONE



CONTACT US

+1 604 336 9088

info@etruscusresources.com

Suite 604 - 850 West Hastings St.
Vancouver, BC, Canada, V6C 1E1

www.etruscusresources.com

Peter Oates, Manager Communications
www.etruscusresources.com
E: peter@etruscusresources.com
T: 604.787.7814
F: 604.688.5017

Carl Ryan, Project Geologist
www.etruscusresources.com
E: carl@etruscusresources.com
T: 604.336.9088
F: 604.688.5017

